



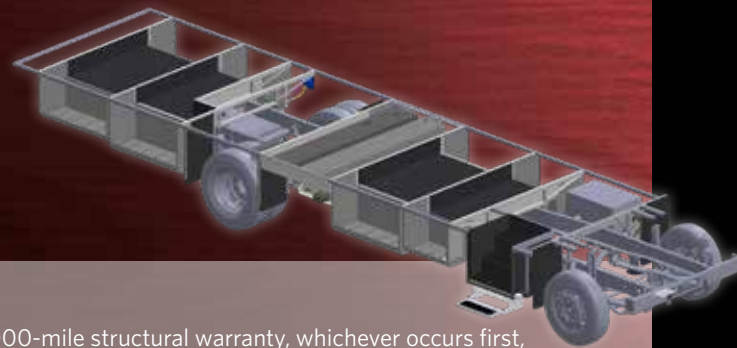
For our gas chassis, we take the Ford® drivetrain and create a solid platform to build on. The result is enhanced balance and control, as well as the strength to carry more weight. The design also allows for larger pass-through storage.



Truss Style Platform Chassis

The Truss Style Platform puts strength, stability, and reliability front and center. Perfect for trips requiring large carrying capacities, and built to store everything you need with spacious pass-through storage, the Truss Style Platform is the ideal chassis for optimum balance and control — Found on Fleetwood Flair gas motorhomes.

Every new adventure requires a solid foundation. The Truss Style Platform is designed with balance, control, a smooth ride, and ample space in mind, all working together to give you a ride like no other RV can provide.



RV OWNERCARE

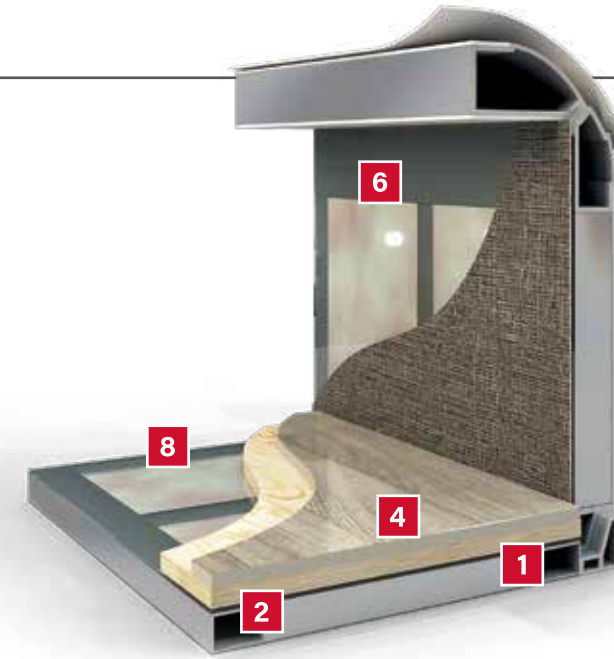
Limited one-year/15,000-mile coach warranty and three-year/45,000-mile structural warranty, whichever occurs first, and it is fully transferable for the first 12 months. RV OWNERCARE is one of the RV industry's most comprehensive programs and includes systems, appliances, components and construction, with no deductible and no service charge.

Chassis Warranty provided by Ford®



We build strength and quality from the inside out.

Fleetwood's exclusive Powerlock™ system is integrated into all Fleetwood RV Class A Gas models.*



At Fleetwood, we don't settle for anything less than the best and neither should you. That is why every Fleetwood features industry-leading materials and construction standards.

- 1 PowerLock System™ Interlocking Walls, Ceiling**
Fleetwood's interlocking aluminum extrusion wall-joint system integrates sidewall and roof assembly into one locked-together overall structure for long-term performance and durability.*
- 2 Precision Welded Joints**
The all aluminum hull structure is engineered and built to precise tolerances and then precision welded to ensure strength and durability on even the roughest road trip.

*Powerlock™ is integrated into all Fleetwood Class A Gas models, with some exceptions to Flair. See dealer for details.

At Fleetwood RV, it's not just what you see that matters. It's what you don't.

- 3 Tuff-Coat Fiberglass Walls**
Thicker than other manufacturers, our Tuff-Coat fiberglass walls provide a durable skin and is the perfect surface for an automotive style finish.
- 4 Thick Robust Floor**
Thicker than the industry standard, Fleetwood engineered the floor for more sound deadening and more insulation which results in a quieter, more comfortable ride no matter the weather or terrain outside.
- 5 Solid Bead-Foam Insulation™**
Fleetwood's above-standard insulation material and process doesn't allow settling or air gaps to form. There is no forcing the precision cut insulation into position like the roll-type pink fiberglass insulation used by other manufacturers.
- 6 Loctite® Industrial Adhesive**
Engineered to meet bonding, sealing and assembly requirements for a durable structure with no de-lamination.
- 7 No Wood Substrate**
Unlike most Class A motorhome manufacturers, you won't find any wood substrate on the exterior walls.
- 8 1/2" Plywood Subfloor**
Thicker than most competitors who use OSB or chip board, the integrated 1/2" subfloor provides a solid surface for flooring and eliminates movement and flexing while traveling.

- 9 Vacu-Bond™ Construction**
Fully sealed and weather-resistant, the vacuum-bonded assemblies combine materials and construction for a straight, solid integrated wall that is better suited to withstand the rigors of the road. An adhesive bonding process applies up to 415,000 pounds of vacuum pressure to the welded-aluminum sidewall frame, bead-foam insulation, thick Tuff-Coat fiberglass skin and inner wall materials, far exceeding industry standards.
- 10 CNC Precision Routed Walls and Floors**
Computer driven routers precisely route walls and floors to fit exact specifications to eliminate gaps, misalignments and provide for a more solid integrated overall structure.



Each of these advantages have been engineered to deliver superior reliability, durability and most of all, customer satisfaction.



EVERYTHING YOU NEED AND MORE.

In Flair, there's no sight that's more inviting than the open road. That's because we've taken everything you'll need on your adventure and included it in this well-thought-out package. The new, larger 7.3 liter 350HP engine will carry you no matter what you have to tow. And with the new all-electronic instrument panel and digital dash, driving your RV becomes even more of a joy.

With exterior comforts like kitchens and TVs, the fun doesn't need to be contained to inside the home. And that's a good thing, because Flair is designed for large groups. All floorplans can easily sleep six, and some can even fit eight. There's even a floorplan that includes two full bathrooms. (32S)

With features in abundance, this Flair is sure to attract attention. Available in five floorplans 28A, 29M, 32S, 34J and 35R.

FLAIR 35R
Shown in Driftwood Decor with Greystone Cabinetry





1



2



3



4



5



6



1 Optional theater seating

2 Booth dinette storage

3 Just like-home kitchen with residential refrigerator, 3-burner range includes cover and stainless steel over the range microwave, sink covers allowing endless prep workspace when making dinner for the crew

4 Facing booth dinette with dream dinette table that converts to an additional sleeping area

5 74" Sofa Sleeper on the Flair 29M adds space for guests to crash for the night

6 Passenger chair comes standard with reclining back, swivel, and manual controls and attractive contrasting double stitching

FLAIR 35R

Shown in Driftwood Decor with Greystone Cabinetry



FLAIR 35R



FLAIR 35R



Hide-A-Loft™ Standard on all Floorplans



FLAIR 29M
Shown in Driftwood Decor with Cappuccino Cabinetry





1 29M L-shaped dinette

2 TV is mounted on a swing arm that allows the TV to be positioned at any angle in order to have the best view from any seat

3 New Heritage painted wood cabinetry option adds a classic look to any decor

4 New for 21 Driver/Passenger caddy area with three cupholders, USBs and various storage compartments

5 29M wardrobe and master bedroom storage solutions with deep pull-out drawers

6 28A residential refrigerator and pantry storage with deep shelves to load up all the essentials



1



2



3



4



5



1 Exterior 50-inch LED TV and stereo is standard on all floorplans

2 Exterior kitchen is offered on floorplans 29M and 34J

3 Legged Electric Patio Awning with LED Lighting is standard on 28A, 29M, 32S, 34J
Legless Electric Patio Awning with LED Lighting is standard on 35R

4 New for 2021 larger lavy sinks and reduced the shower step-up height

5 Washer and Dryer options on 35R: All-in-one combo unit or stackable

6 Keep all your essentials organized in the passenger side desk drawer caddy

7 Meal prep with ease on the solid surface countertops and the glass range cover provides additional countertop space

FLAIR 35R

Shown in Driftwood Decor with Greystone Cabinetry



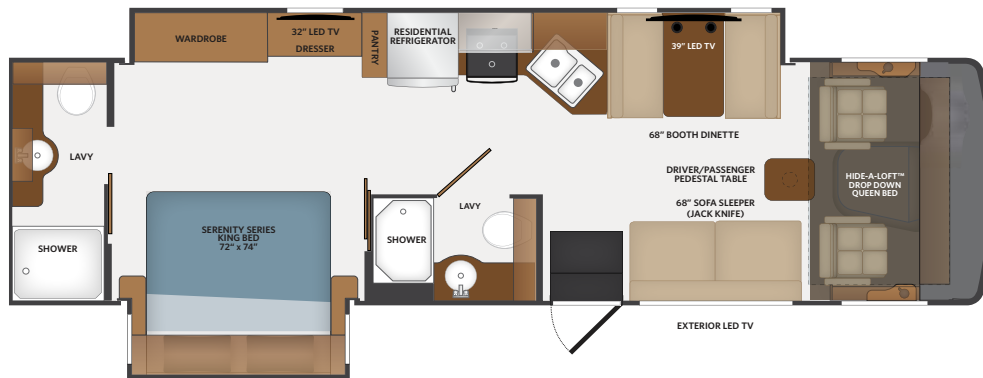
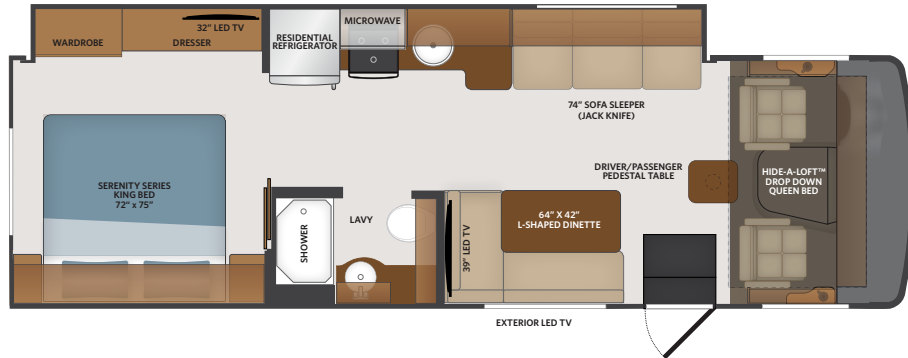
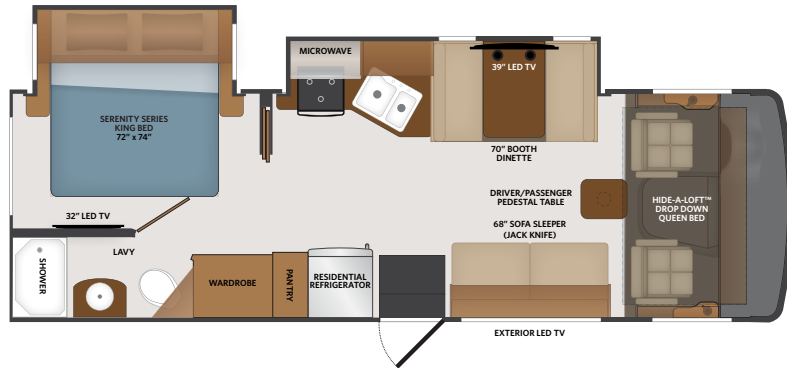
FLAIR 

INTERIOR DESIGNER RECOMMENDS:

Silver Lake Decor with Heritage or Greystone Cabinetry

Driftwood Decor with Cappuccino or Oxford Cabinetry

Create a customized look that reflects your personal style.



28A

Options: 096, 105, 194, 230, 342, 343, 471, 953

TOP FLOORPLAN FEATURES

- Sleeps up to 6
- Open Living Room
- King Bed
- Private Lavys
- Residential Refrigerator
- 16,000K Chassis

29M

Options: 096, 105, 230, 331, 471 830, 953

TOP FLOORPLAN FEATURES

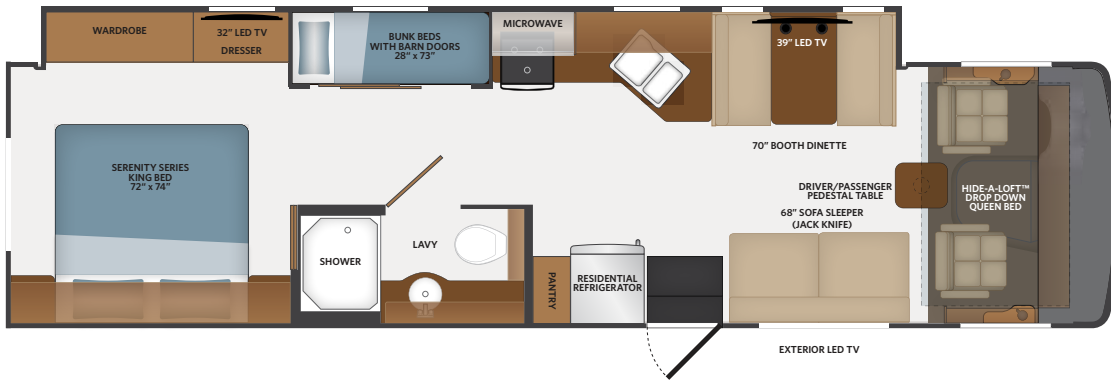
- Sleeps up to 6
- Family Friendly Galley
- Exterior Kitchen w/Mini Frig, Microwave, Sink and Storage
- L-shaped Dinette with Storage
- Hide-A-Loft™ Drop Down Queen Bed
- Pedestal Table between the Driver and Passenger Seats
- 18,000K Chassis

32S

Options: 096, 105, 194, 230, 471, 605, 953

TOP FLOORPLAN FEATURES

- Sleeps up to 6
- Two Full Lavys
- Exterior LED TV 50"
- Full Wall Slide
- Booth Dinette
- New Electronic Instrument Panel
- 22,000K Chassis

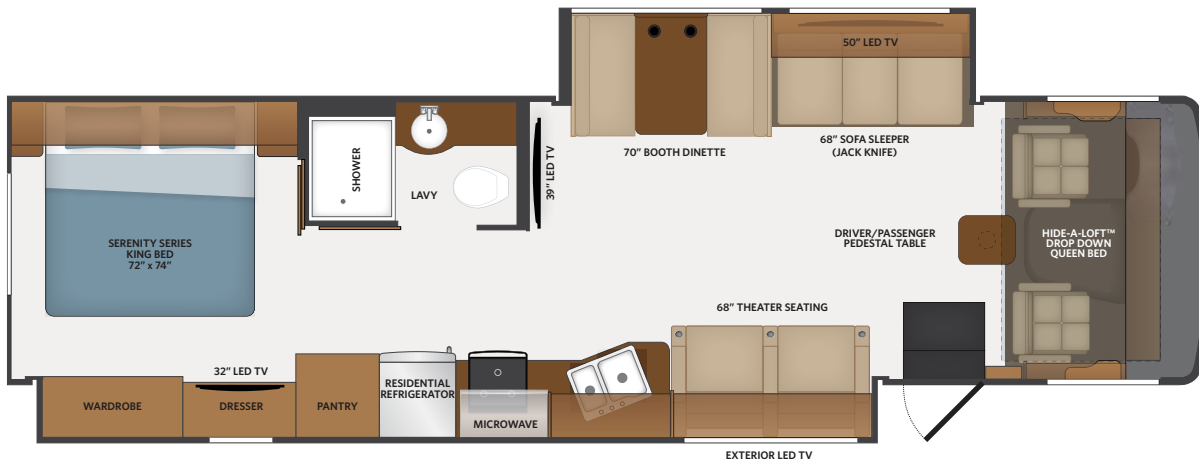


34J

Options: 096, 105, 194, 230, 471, 953

TOP FLOORPLAN FEATURES

- Sleeps up to 8
- Bunk Beds
- Full Length Wardrobe
- Sofa Sleeper
- Pass through Exterior Storage
- Exterior Kitchen w/Mini Frig, Microwave, Sink and Storage
- 22,000K Chassis



35R

Options: 096, 105, 126, 131, 230, 471, 953

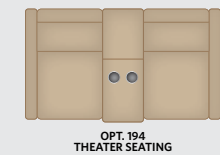
TOP FLOORPLAN FEATURES

- Sleeps up to 6
- Spacious living area
- Theater Seating
- Reduced Shower Height Step-up
- Solid Surface Galley Top and Sink Covers
- 2000W Inverter
- Exterior LED TV 50"
- 22,000K Chassis

FLAIR OPTIONS

096	KING® Universal Satellite System
105	Dometic 8CF Double Door Refrierator - LP
126	Washer/Dryer — All in one combo
131	Washer/Dryer — Stackable
194	Theater Seating
230	Roof Vent Rain Covers

331	5.5KW Generator w/Dual A/C
342	Dual A/C w/EMS — LP Refrigerator
343	Dual A/C w/EMS — Residential Refrigerator
471	Steering Stabilizer System
830	Facing Dinette
953	Power Driver Seat





EXTERIOR GRAPHICS

VINYL GRAPHICS



AUTUMN



GRANITE



SHOWN ON 28A

PARTIAL PAINT



AUTUMN
PARTIAL PAINT — NA 28A



GRANITE
PARTIAL PAINT — NA 28A



SHOWN ON 35R

FULL BODY PAINT — (32S, 34J, 35R)



CALIENTE
FULL BODY PAINT — NA 28A & 29M



CAVALRY
FULL BODY PAINT — NA 28A & 29M



FULL BODY PAINT ILLUSTRATION, ACTUAL VEHICLE MAY VARY

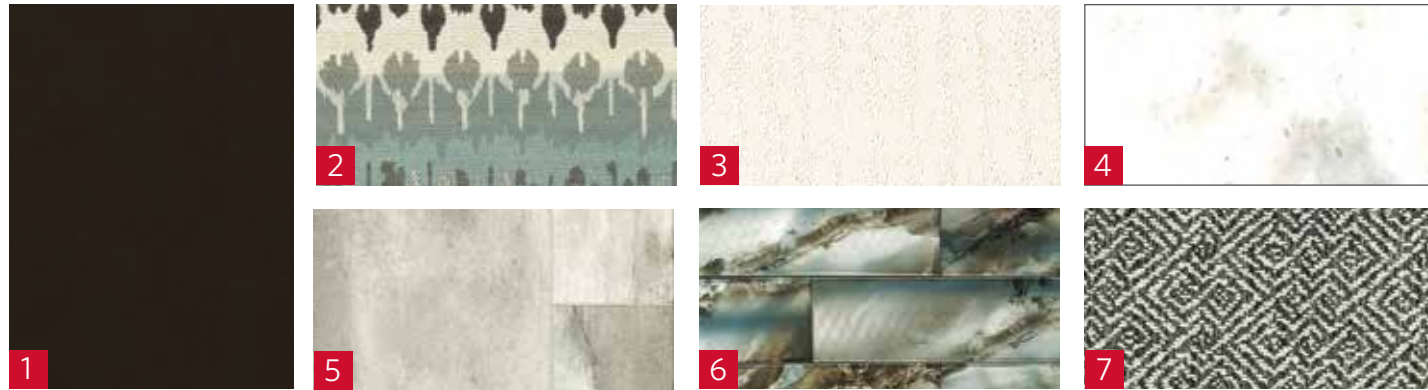
INTERIOR DECOR

DRIFTWOOD



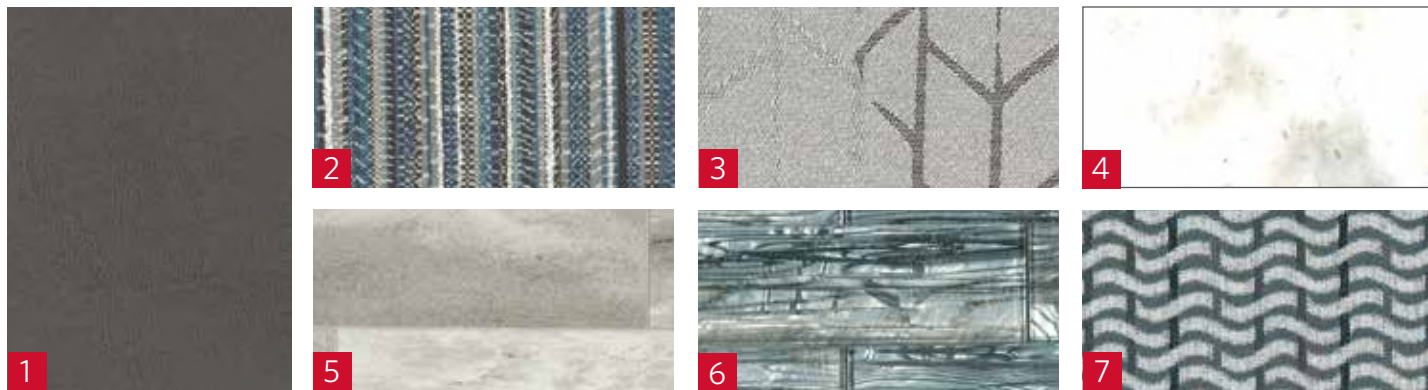
CAPPUCCINO

SEPIA
SEPIA INTERIOR IS ONLY AVAILABLE
WITH HERITAGE CABINETRY



GREYSTONE

SILVER LAKE



HERITAGE



OXFORD

- 1 SOFA
- 2 LIVING ACCENT
- 3 BEDSPREAD
- 4 COUNTERTOP
- 5 FLOORING
- 6 BACKSLASH
- 7 VALANCE

FLAIR

EXTERIOR	28A	29M	32S	34J	35R
Aerodynamic Fiberglass Cap w/ Hood and Automotive-Style Headlights	S	S	S	S	S
Rear Laminated Wall w/ Automotive-Style Lighting	S	S	S	S	S
ABS Wheel Well Trims	S	S	S	S	S
TPO Roof: Thermoplastic Polyolefin	S	S	S	S	S
Legged Electric Patio Awning w/ LED Lighting	S	S	S	S	—
Legless Electric Patio Awning w/ LED Lighting	—	—	—	—	S
Entry Awning	—	—	—	—	S
Radiused Entry Door w/Screen door, Latch, and Deadbolt Lock	S	S	S	S	S
Window Above Entry Door	S	S	S	S	—
Slideout Awning Toppers Above All Slideouts	S	S	S	S	S
Slam Latch Luggage Door Handles, Black	S	S	S	S	S
Entry Grab Handle	S	S	S	S	S
Power Entry Step w/Light	S	S	S	S	S
Bottom/Side-Swing Radiused, Color-Matched Fiberglass Baggage Doors	S	S	S	S	S
Single-Pane Frameless Windows	S	S	S	S	S
Patio LED Light	S	S	S	S	S
Clearance and Marker Lighting at Front, Side, and Rear	S	S	S	S	S
Gravity Fresh Water Fill	S	S	S	S	S
Enclosed Exterior Waste Station w/Discharge Valves	S	S	S	S	S
Trailer Hitch: 7-Way Round Tow Connection (8,000 lbs.)	S	S	S	S	S
TV Antenna: Unidirectional KING® Controls Jack Antenna	S	S	S	S	S
LP Connection	S	S	S	S	S
4-Point Fully-Automatic Hydraulic Leveling Jacks	S	S	S	S	S
Rear Ladder	S	S	S	S	S
Vinyl Graphics	S	S	S	S	S
Partial Paint w/Vinyl Graphics	—	O	O	O	O
Full-Body Paint	—	—	O	O	O

Roof Vent Rain Covers	O	O	O	O	O
Roof-Mounted Satellite Dish Prep	S	S	S	S	S
KING® Universal Satellite System	O	O	O	O	O
Exterior Kitchen w/Mini-Fridge, Microwave, Sink, and Storage	—	S	—	S	—
CAB EXTERIOR	28A	29M	32S	34J	35R
Automotive-Style One-Piece Windshield	S	S	S	S	S
Daytime Running Lights	S	S	S	S	S
Driver and Passenger Slider Windows	S	S	S	S	S
Automotive-Style Windshield Wiper System	S	S	S	S	S
Doggy Window, Passenger	S	S	S	S	S
Exterior-Mounted Side View Cameras	S	S	S	S	S
Remote Power and Heated Mirrors	S	S	S	S	S
Bilstein® Steering Stabilizer	O	O	O	O	O
CAB INTERIOR	28A	29M	32S	34J	35R
Driver Chair w/Reclining Back, Swivel, and Manual Controls	S	S	S	S	S
Driver Chair w/Reclining Back, Swivel, and 6-Way Power Controls	O	O	O	O	O
Passenger Chair w/Reclining Back, Swivel, and Manual Controls	S	S	S	S	S
Driver and Passenger Side Panels w/Cupholders	S	S	S	S	S
Driver and Passenger Cupholders	S	S	S	S	S
Power Windshield Roller Shade	S	S	S	S	S
Driver/Passenger Manual Window Roller Shades	S	S	S	S	S
Driver/Passenger Overhead Map Lighting	S	S	S	S	S
Black Instrument Gauges w/ Electronic Information Center	S	S	S	S	S
High-Output Dash Air Conditioning and Heat	S	S	S	S	S
Electronic Cruise Control	S	S	S	S	S
Windshield Wipers w/Delay	S	S	S	S	S
Remote Switch for Power and Heated Mirrors	S	S	S	S	S

Steering Wheel w/Tilt Column	S	S	S	S	S
Sony® Stereo w/AM/FM/Bluetooth® w/Backup Camera Screen	S	S	S	S	S
Side Console Dash Stereo Speakers	S	S	S	S	S
USB and Auxiliary Inputs	S	S	S	S	S
3-Point Driver and Passenger Seatbelts w/Adjustable Straps	S	S	S	S	S
12V Accessory Ports	S	S	S	S	S
110V AC Outlets	S	S	S	S	S
Automotive-Style Dash w/ Workstation	S	S	S	S	S
Generator On/Off Switch	S	S	S	S	S
Engine Cover w/Snack Tray	S	S	S	S	S
Automatic Leveling Jack Controls	S	S	S	S	S
Driver and Passenger Center Table	S	S	S	S	S
Auxiliary Start Switch	S	S	S	S	S
Hide-A-Loft™ Drop-Down Queen-Sized Bed	S	S	S	S	S
INTERIOR	28A	29M	32S	34J	35R
Jackknife Sofa	S	S	S	S	S
Theater Seating Sofa	O	—	O	O	S
Facing Booth Dinette w/Dream Dinette Table and Single-Door Storage	S	O	S	S	S
L-Shape Dinette w/Single-Door Storage	—	S	—	—	—
Solid-Surface Galley Top w/Sink Covers	—	—	S	S	S
Surf(x)® Tops Throughout (Excluding Galley)	—	—	S	S	S
Surf(x)® Tops Throughout	S	S	—	—	—
Feature Wall w/Accent Wall Covering	S	S	S	S	S
Flat Ceiling w/Soft-Touch Vinyl	S	S	S	S	S
Linoleum Flooring Throughout	S	S	S	S	S
Non-Ozite Lined Cabinet Interiors w/Adjustable Shelving	S	S	S	S	S
Full-Extension Drawer Guides w/Latches	S	S	S	S	S
Hidden Euro-Style Hinges and Struts	S	S	S	S	S

Solid Wood Raised-Panel Cabinet Doors	S	S	S	S	S
Galley Overhead Glass Inserts	S	S	S	S	S
Interior Wood Color Coordinating Slideout Fascia	S	S	S	S	S
Valances w/Lambrequins	S	S	S	S	S
Manual Night Roller Shades	S	S	S	S	S
Energy-Efficient 3" LED Flush-Mounted Ceiling and Under Cabinet Reading Lights Throughout	S	S	S	S	S
Brushed-Nickel Faucets, Fixtures, and Hardware	S	S	S	S	S
INTERIOR ENTRY	28A	29M	32S	34J	35R
Battery Disconnect	S	S	S	S	S
Metal Interior Grab Handle at Entry	S	S	S	S	S
Entry Steps w/Molded Rubber Tread	S	S	S	S	S
KITCHEN	28A	29M	32S	34J	35R
Refrigerator: Insignia™ Residential, Stainless Steel	S	S	S	S	S
Refrigerator: LP 8 cu.ft. Dometic®	O	O	O	O	O
3-Burner Drop-In Range w/Oven	S	S	S	S	S
SS Over-the-Range Microwave	S	S	S	S	S
Backsplash	S	S	S	S	S
Sink: Stainless Steel, Single Bowl	—	S	—	—	—
Sink: Stainless Steel, Double Bowl	S	—	S	S	S
Residential Single-Handled Faucet w/Pull-Out Sprayer	S	S	S	S	S
Adjustable Shelves Throughout	S	S	S	S	S
Power Ceiling Vent	S	S	S	S	S
BEDROOM OR BUNK AREA	28A	29M	32S	34J	35R
King-Sized Bed	S	S	S	S	S
Bunk Beds	—	—	—	S	—
Designer Bedspread, Headboard, Pillow Shams, and Pillows	S	S	S	S	S
120V and USB Ports	S	S	S	S	S
Reading Lights	S	S	S	S	S
BATHROOM	28A	29M	32S	34J	35R
Sink: Top-Mounted, Stainless Steel	S	S	S	S	S
Residential Faucet w/Single Handle	S	S	S	S	S

Medicine Cabinet w/Mirror	S	S	S	S	S
ABS Shower Surround	S	S	S	S	S
Glass Shower Door	S	S	S	S	S
Shower Skylight	S	S	S	S	S
Metal Shower Head w/Sliding Adjustable Bar, Soap Dish, and Matching Single-Valve Faucet	S	S	S	S	S
Standard Toilet, Porcelain	S	S	S	S	S
Macerator Toilet, Porcelain	—	—	S	—	—
Power Ceiling Vent	S	S	S	S	S
ENTERTAINMENT	28A	29M	32S	34J	35R
32" Flat Screen LED TV (Bedroom)	S	S	S	S	S
32" Flat Screen LED TV (Bunk Beds)	—	—	—	S	—
39" Flat Screen LED TV (Living Area)	S	S	S	S	S
50" Flat Screen LED TV (Living Area)	—	—	—	—	S
Ceiling Speakers in Living Area	S	S	S	S	S
Bluetooth® Coach System in Bedroom w/Exterior Speakers	S	S	S	S	S
Exterior Entertainment Center: 50" LED TV	S	S	S	S	S
ELECTRIC AND UTILITIES	28A	29M	32S	34J	35R
A/C: Single 15,000 BTU w/Chill Grill	S	S	S	—	—
A/C: Dual 13,500 BTU	—	O	O	S	S
A/C: Dual 11,000 BTU w/4.0 Generator and EMS	O	—	—	—	—
Furnace: 30,000 BTU	S	S	S	—	—
Furnace: 34,000 BTU	—	—	—	S	S
50 Amp Service	S	S	S	S	S
55 Amp Power Converter	S	S	S	S	S
Inverter: Single 1000W	S	S	—	—	—
Inverter: Single 2000W	—	—	S	S	S
WiFiRanger™ Sky4	S	S	S	S	S
Solar Panel Pre-Wire	S	S	S	S	S
Multiplex Wiring Control System w/4.3" Touch Screen Panel	—	—	S	S	S
6V Auxiliary Batteries (2)	S	S	S	S	S
Generator: 4.0kW Onan Quiet	S	S	—	—	—

Generator: 5.5kW Onan Quiet	—	O	S	S	S
Automatic Generator Start	—	S	S	S	S
Master Battery Disconnect Switch	S	S	S	S	S
Water Pump: 12V 3GPM High-Capacity SHURflo® Water Pump	S	S	—	S	S
Water Pump: 12V 5.3GPM High-Capacity AquaJet Water Pump	—	—	S	—	—
Water Purification System	S	S	S	S	S
Water Heater Bypass System	S	S	S	S	S
City Water Hook-Up	S	S	S	S	S
Exterior Shower	S	S	S	S	S
Cable TV and Satellite Hook-Up	S	S	S	S	S
San-T-Flush™ Black Holding Tank Flush System	S	S	S	S	S
Single-Location Monitor Panel w/LPG, Touch Sensor Tank Monitoring and Battery Readouts	S	S	—	—	—
Fire Extinguisher, LP, Carbon Monoxide, and Smoke Detectors	S	S	S	S	S
GFCI Receptacle in Exterior Storage	S	S	S	S	S
Combination Washer and Dryer Prep	—	—	—	—	S
Combination Washer and Dryer	—	—	—	—	O
Stackable Washer and Dryer	—	—	—	—	O

BILSTEIN® STEERING STABILIZER SYSTEM (OPTIONAL)

Equip your Flair with this shock absorber system that dampens the bumps and vibrations of the road in the steering system. Bilstein allows for easier control to the front-end steering.





FLAIR — OUTSTANDING STANDARDS AND OPTIONS



RENEWABLE SAFE POWER
Each Flair is pre-wired for a solar panel which allows the adding of an after market solar panel.

WIFI RANGER™ SKY4 DC
Boost a weak signal to get online in no time with this private secure WiFi booster.



TOUCH PAD ELECTRONICS PANEL
Easily operate your RV's systems and accessories with this modern LCD touchscreen control panel. *NA 28A, 29M



AUTO GENERATOR START*
This feature automatically powers the generator if your batteries need to be charged. On 32S, 34J, 35R your A/C needs to turn on and then turns off when they have enough juice or your RV's cooled down. *NA 28A **29M varies from what is pictured



BONDED WINDSHIELD
Feel safer with this automotive style curved bonded windshield. This automotive inspired design bonds the windshield along the entire perimeter of the glass. This increases the structural strength and also reduces the risk of stress cracks.

AUTO HYDRAULIC LEVELING SYSTEM
Save time and avoid hassle by leveling and stabilizing your RV with the push of a button conveniently located on the dash.



HIDE-A-LOFT™ DROP DOWN BED
Invite more guests on your road trip without compromising space with this queen bed, featuring industry-leading headroom and up to 600lb capacity. Standard on all floorplans.



BLUETOOTH® JENSEN STEREO SYSTEM
Jensen bluetooth coach stereo system located in the master bedroom with the ability to listen to your favorite jams through the exterior units speakers will blast outside the unit.



OPTIONAL THEATER SEATING
Recline back and enjoy the show or view with additional storage in armrest caddy, built in cupholders. Optional on 28A, 32S, 34J



KING EURO TOP MATTRESS
Sleep like royalty in this spacious and luxurious residential style bed with custom headboard. (Shown 35R floorplan)



EXTERIOR 50-INCH LED TV & STEREO
Standard on all floorplans so you may extend your living space plus LED lighting on all awnings.



TUFF PLY ENGINEERED VINYL ROOF
Protect yourself from the elements with the state-of-the-art one-piece roof. Constructed out of "Tuff-Ply" or Thermoplastic Poly Olefin which is as tough as it comes and has very low maintenance.

FLAIR SPECIFICATIONS

CHASSIS	28A	29M	32S	34J	35R
Wheelbase (inches)	190"	190"	208"	228"	228"
GVWR (lbs)	16,000	18,000	22,000	22,000	22,000
Front GAWR (lbs)	6,500	7,000	8,000	8,000	8,000
Rear GAWR (lbs)	11,000	12,000	15,000	15,000	15,000
GCWR (lbs)	21,000	23,000	26,000	26,000	26,000
Hitch Rating Weight (lbs)	8,000	8,000	8,000	8,000	8,000
Tongue Weight (lbs)	800	800	800	800	800
Fuel Capacity (gal)	80	80	80	80	80

DIMENSIONS AND CAPACITIES	28A	29M	32S	34J	35R
Overall Length (inches)	29' 3"	31' 0"	31' 6"	36' 0"	36' 0"
Overall Height (with A/C)	12' 4"	12' 4"	12' 4"	12' 4"	12' 4"
Overall Width (maximum)	100"	100"	100"	100"	100"
Interior Height (maximum)	82"	82"	82"	82"	82"
Interior Width (maximum)	96"	96"	96"	96"	96"
Patio Awning Width (ft./in.)	20' 0"	20' 0"	14' 0"	22' 0"	18' 0"
Interior Storage (cu. ft.)	81	92	97	110	130
Exterior Storage (cu. ft.)	70	45	83	82	160
Fresh Water Holding Tank (gal)	50	50	50	50	50
Grey Water Holding Tank (gal)	37	37	74	37	37
Black Water Holding Tank (gal)	37	37	37	37	37
Appliance Propane Tank (gal) (WC)	14	14	14	14	14
Water Heater Tank (gal)	6	6	10	6	6

Product information, photography, illustrations included in this publication were as accurate as possible at the time of printing.

FORD® CHASSIS



Model: Ford®

Engine: 7.3L Triton V8

Transmission: Ford® 6-Speed, Automatic w/Overdrive

Alternator: 175 Amp

Torque: 468 lb.-ft. @ 3,000 RPM

Horsepower: 350HP @ 3,900 RPM

DISCLAIMERS

- GVWR (Gross Vehicle Weight Rating) is the maximum permissible weight of this fully loaded motorhome. The GVWR is equal to or greater than the sum of the (UVW) unloaded vehicle weight plus the (OCCC) occupant cargo-carrying capacity.
- GAWR (Gross Axle Weight Rating) is the maximum permissible loaded weight a specific axle is designed to carry.
- GCWR (Gross Combined Weight Rating) is the value specified by the motor home manufacturer as the maximum allowable loaded weight of this motorhome with its towed vehicle. Towing and braking capacities may be different. Refer to Fleetwood and chassis manufacturer's manuals for complete information.
- Length measured from front bumper to rear bumper (excludes accessories).
- Excludes safety equipment and awnings.
- Motorhomes feature a body width over 96" which will restrict your access to certain roads. Before purchasing, you should research any state and/or province road laws which may affect your usage.
- Tank manufacturer's listed water capacity (WC). Actual propane capacity is 80% of water listing as required by the safety code.

† The chassis manufacturer recommends the installation of a supplemental brake control system to activate the brakes on the vehicle or trailer you are towing. Hitch receiver ratings expressed are maximum for the hitch receiver installed and may require the purchase of additional equipment that is dependent on the weight of the towed load. Consult with hitch receiver manufacturer for further information.

* UVW and OCCC are found on the label containing the federal certification tag in each RV.

*** All 2021 REV Recreation Group motorhomes include a limited one year/15,000-mile coach warranty and three-year/45,000-mile structural warranty, whichever occurs first, and is fully transferable for the first 12 months.

FLEETWOOD MOTORHOME ASSOCIATION

As a Fleetwood RV owner, you're invited to become a member of the Fleetwood Motorhome Association (FMA). Becoming a member is the perfect way to meet other Fleetwood owners who love to travel across America and share in the RV lifestyle. Visit the FMA website at www.fma4fun.org to learn more and join the fun.

CONTACT US

To locate a dealer near you, visit our website at www.fleetwoodrv.com or call 1-800-322-8216. We can also be contacted at Fleetwood RV Customer Relations, P.O. Box 1007, Decatur, IN 46733.

IMPORTANT—PLEASE READ: Product information, photography and illustrations included in this publication were as accurate as possible at the time of printing. For further product information and changes, please visit our website at www.fleetwoodrv.com or contact your local Fleetwood RV dealer. Prices, materials, design and specifications are subject to change without notice. All weights, fuel, liquid capacities and dimensions are approximate. Fleetwood RV has designed its recreational vehicles to provide a variety of uses for its customers. Each vehicle features optimal seating, sleeping, storage and fluid capacities. The user is responsible for selecting the proper combination of loads (i.e., occupants, equipment, fluids, cargo, etc.) to ensure that the vehicle's capacities are not exceeded.

YOUR LOCAL DEALER



LaMesaRV.com
800-496-8778

Explore Your World Like Never Before



About REV Group, Inc.



REV Group® (REVG) is a leading designer, manufacturer, and distributor of specialty vehicles and related aftermarket parts and services. We serve a diversified customer base, primarily in the United States, through three segments: Fire & Emergency, Commercial, and Recreation. We provide customized vehicle solutions for applications, including essential needs for public services (ambulances, fire apparatus, school buses, and transit buses), commercial infrastructure (terminal trucks and industrial sweepers) and consumer leisure (recreational vehicles). Our diverse portfolio is made up of well-established principal vehicle brands, including many of the most recognizable names within their industry. Several of our brands pioneered their specialty vehicle product categories and date back more than 50 years. REV Group trades on the NYSE under the symbol REVG. Investors-REVG



IMPORTANT—PLEASE READ: Product information, photography and illustrations included in this publication were as accurate as possible at the time of printing. For further product information and changes, please visit our website at www.fleetwoodrv.com or contact your local Fleetwood RV dealer. Prices, materials, design and specifications are subject to change without notice. All weights, fuel, liquid capacities and dimensions are approximate. Fleetwood RV has designed its recreational vehicles to provide a variety of uses for its customers. Each vehicle features optimal seating, sleeping, storage and fluid capacities. The user is responsible for selecting the proper combination of loads (i.e., occupants, equipment, fluids, cargo, etc.) to ensure that the vehicle's capacities are not exceeded.

FleetwoodRV.com

©2020 REV Group, Inc. Printed in the USA. 11/20. Model Year 2021, First Edition.

Part #: L93-0028-21



OUR VERY OWN FLEETWOOD RV MOTORHOME SERVICE CENTERS

At Fleetwood RV, we strive to deliver peace-of-mind at every turn. Our devotion to customer service starts with our trusted dealer network and spans to our own staff of motorhome service professionals at REV Recreation Group's regional technical centers. The motorhome service centers are strategically located throughout the United States to provide you convenient service wherever the road takes you.

Below, you'll find the closest motorhome service center, as well as a list of the other centers. Please visit www.fleetwoodrv.com/motorhome-service-centers to schedule a Service Appointment.

East Coast

REV RV SERVICE & REPAIR
800-509-3417

West Coast

REV RV SERVICE & REPAIR
877-466-6226

ROADSIDE ASSISTANCE. ANYWHERE. ANYTIME.

24/7 CUSTOMER SUPPORT FOR:

- FUEL
- BATTERY
- LOCKSMITH
- TOWING
- SLIDE-OUT ISSUES
- AND MUCH MORE!

1-855-268-0414



One-year of REV Assist is free with the purchase of any new 2021 Fleetwood. You may extend your coverage after the first year at www.revgroup.com/rev-assist.